

Primary Schools & Bikeability Instructors

An Important Partnership

Hayley & Sian are both Bikeability instructors in different parts of the country, they have over 19 years of instructing experience between them and have delivered over 110 Bikeability training courses between them.

The partnership between schools and instructors is an important one.

Instructors are

- trained
- experienced in working in partnership with schools
- responsible for supporting pupils through the Bikeability training safely and enthusiastically

Developing the school - instructor partnership

Hayley & Sian believe it is important to

- be flexible with schools and acknowledge that schools are juggling many things each day.
- meet the needs of schools on the day of the Bikeability training where necessary, such as changing times or groupings slightly if something unexpected arises or managing unexpected facility changes.
- be friendly and wear a smile at all times

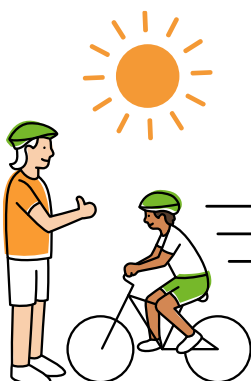
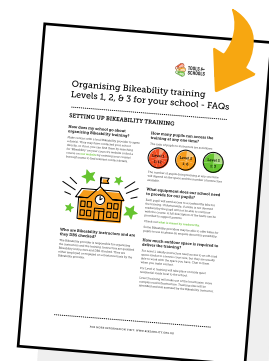
The impact of a positive partnership

Hayley & Sian report that positive impact can include

- being able to meet individual school needs
- longer term ongoing support for schools
- supporting schools to enhance active travel habits and school's Active Travel Plans
- championing school initiatives such as Bikers Breakfast and The Golden Padlock, (Where once a week a golden padlock is attached to a pupil's bicycle in the cycle rack, the pupil who owns that cycle wins a prize)
- delivering assemblies in schools and supporting festivals in schools.



Organising Bikeability levels 1,2,3 in your school



In summary...

Sian says

"Being a Bikeability Instructor is great fun and highly rewarding. Having worked in the same schools for many years now it's clear to see that many schools value the training greatly. We have schools who now introduce cycling in KS1 (Learn to Ride, L1) and encourage cycling to younger pupils with the view of preparing them for Bikeability in years 5 & 6".

If you would like to find out more about organising Bikeability training in your school, take a look at the [Organising Bikeability Levels 1,2 & 3 in your school \(FAQs\)](#) and [Bikeability Training](#).