



## KS1 Art and Design & Geography

### Terrains, weather, cycling model making

Identify key features of various terrains across the world

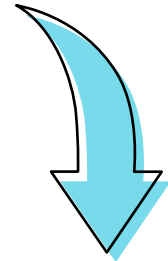
#### READY CURRICULUM LINKS & SESSION OUTCOMES

**Art & Design:** to use a range of materials creatively to design and make products.

**Geography:** Explore terrains and weather and implications for cycling

This learning resource supports pupils to:

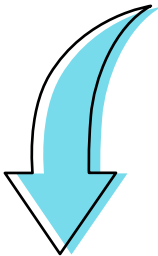
- Compare and contrast weather and terrains in different locations
- Plan and select appropriate materials to create a model of a cyclist in a chosen environment



#### SET WHAT YOU WILL NEED

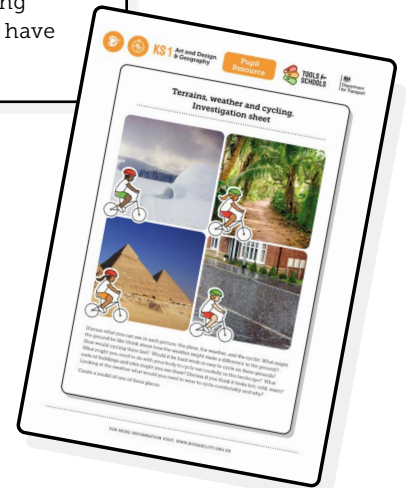
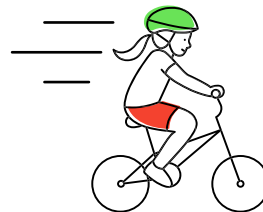
- **Terrains, weather and cycling. Investigation sheet** (1 per group)
- A variety of art resources suitable for creating bicycles and terrains i.e. paper straws, pipe

cleaners, card, modelling clay, lolly sticks, glue, paper, playdough, sand, cotton wool, leaves, grasses or anything suitable you may have available.



#### PEDAL WHAT TO DO

- Introduce the activity and share the **Terrains, weather and cycling. Investigation sheet**
- Enable pupils to share thoughts and feelings about the terrain and weather in the images
- Pupils select one location, plan and create a model



#### TO MAKE THIS LEARNING ACTIVE



Pupils can be encouraged to act out how it might look to cycle through the various landscapes, to support their discussion. Pupils could mime the actions and others can guess which landscape they are cycling through.

#### DID YOU KNOW?

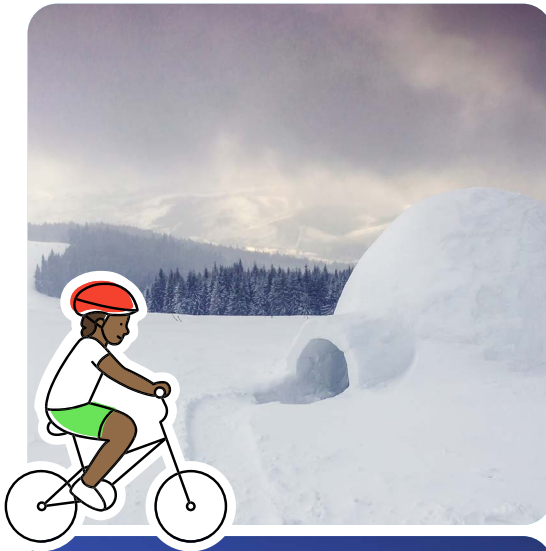


Tyres use rubber, usually from rubber plantations in burned down rain forests. Bicycle tyres are skinnier than car tyres, so don't need as much rubber, this can help to save the rain forests. Brilliant!



## Terrains, weather and cycling. Investigation sheet

.....



Discuss what you can see in each picture; the place, the weather, and the cyclist. What might the ground be like (think about how the weather might make a difference to the ground)? How would cycling there feel? Would it be hard work or easy to cycle on these grounds? What might you need to do with your body to cycle successfully in this landscape? What sorts of buildings and sites might you see there? Discuss if you think it looks hot, cold, warm? Looking at the weather what would you need to wear to cycle comfortably and why?

Create a model of one of these places.